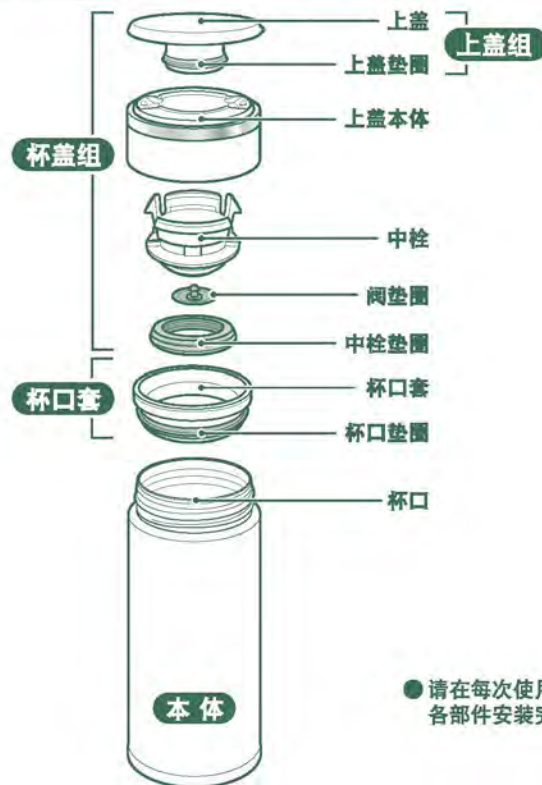


各部位名称


● 请在每次使用前确保各部件安装完好。

使用前请详细阅读说明书，以便正确使用。并请妥善保管本说明书。

请务必遵守 ● 使用时为避免烫伤或饮料的变质、变色、商品故障或污垢，请注意下述事项。

请勿让婴幼儿使用。请勿放在婴幼儿摸得到的地方
会造成烫伤、受伤等危险。

请勿靠近电暖炉或瓦斯炉等火源附近
以免造成变形、变色。

请勿使用微波炉来加热
会有引起火花危险。并会造成变形、变色。

请勿使用保温性能不良的产品
使用此类产品倒入热饮时，本体外侧可能过热，会有烫伤的危险。

饮料请于当天喝完
以免造成腐坏。另外，长时间放置不饮用，可能因内容物腐坏产生气体，使本体内部压力增加，导致转开时杯盖组飞散、饮料喷出或杯盖组破损飞散等危险。

请确实盖紧杯盖组
以免外漏造成烫伤。

本商品为饮品的保温保冷之用，请勿用于其它用途

请绝对不要撕下本体外侧底部的贴纸
否则会造成生锈、穿孔等导致故障。

底部贴纸



加入饮料的量请到图的位置为止
加入过量，盖上杯盖组时会造成溢出，如是热饮会有烫伤的危险。此外，盖紧后也会有漏出的可能。

饮料的位置


使用后请立即充分清洗本体内部
否则会造成生锈、穿孔等导致故障，或引起腐坏。

开车时请勿饮用。另外请将杯盖组确实盖紧

以免烫伤，或造成车内及衣物弄脏。开车时使用会分散注意力，非常危险。

请勿分解和修理
以免造成故障或损坏等事故。

请确实装好上盖、中栓、阀垫圈、中栓垫圈、杯口垫圈后再使用
以免外漏或烫伤，或造成车内及衣物弄脏。

加入热水时

- 请勿摇晃本体
会有烫伤、受伤等危险。
- 在喝的时候有可能烫伤，请注意安全
因隔热效应，即使放入热饮，本体外侧也不会变热。
- 请在装有杯盖组上盖的状态下使用
杯盖组内侧可能过热，会造成烫伤、受伤等危险。

放入运动饮料时，请务必遵守以下事项

- 即使是外出时等不便清洗的情况下，也请使用后立即清洗本体内侧、本体外侧、杯盖组、杯口套。
使用后如放置不洗，会造成生锈、穿孔等故障。
- 为避免刮伤本体内侧的防粘涂层，请使用柔软的海绵进行清洗。
如果刮伤会造成生锈、穿孔等故障。

使用车内的置杯架时...

- ① 使用后请确实盖紧杯盖组
以免本体翻倒或倾斜时，导致饮料外漏造成烫伤及受伤。
 - ② 请确认本体已完全放入置杯架后再使用
在不稳定或未确实放入的状态下使用，一旦本体倾倒等会造成烫伤、受伤及事故。
 - ③ 请确认支撑强度后再使用
若置杯架支撑强度不够，会造成置杯架破损或倾倒烫伤，并会弄脏车内与衣服。
 - ④ 使用市售的置杯架时，请选购固定式
请勿使用悬挂于窗边或冷气孔等悬挂式置杯架，以免置杯架倾倒。
- 根据部分车种及市售置杯架的种类不同，有时无法放入。

请勿放入下述的饮料

- 干冰、碳酸饮料
本体内部压力增加，造成饮料喷出或杯盖组破损飞散等，会有危险。
- 味噌汤、热汤或昆布茶等含有较多盐分的流质
本体内部为不锈钢材质，避免造成生锈而降低保温、保冷功能。
- 牛奶、奶类饮料、果汁等
因成分容易变质，长时间放置不饮用，会因腐坏产生气体，导致本体内部压力增加，造成内容物喷出或杯盖组破损飞散等危险。
- 果肉、茶叶
会造成堵塞、外漏等。

请勿放在火源（煤气台等）或电炉、IH炊具、IH灶台上
以免造成火灾或故障。

注意事项

请勿将滚烫的茶壶接触到杯口及杯口套

以免倾倒造成烫伤的危险，或因而破损、变形。



清洗后的杯盖组为拆开状态，为避免残留水分请用几次并将水充分擦干
上盖、上盖本体、中栓之间可能残留水分，残留水分会造成外漏。

使用后请务必将中栓、阀垫圈、中栓垫圈、杯口套、杯口垫圈充分洗净
否则会造成腐烂、发霉、串味或变色。另外会造成饮料外漏。

饮用时，勿将本体急剧倾斜，请慢慢的喝
以免溢出或烫伤，也避免弄脏衣服。

请勿在放入茶包的状态下盖上杯盖组
以免茶包鼓起造成饮料外漏或溢出。

请勿摔、碰等强力撞击
会造成树脂部分破损，本体表面凹陷而破坏或降低保温性能。

请勿用指甲及坚硬物品刮擦本体的图案部份
会造成图案脱落。

长时间保温热茶时，茶水会变色。外出时建议使用茶包

放入皮包内时，请直立放置，以免外漏

请确认上盖、中栓、阀垫圈、中栓垫圈、杯口套是否正确安装后再使用
否则会造成饮料外漏。

本产品是以直接饮用为目的设计的。倒出饮料时可能会造成飞溅。

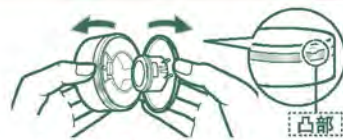
当摇晃产品时，会听到“沙沙”声。这是嵌在本体内胆中用来提升保温/保冷效果的铜箔或铝箔所发出的声响，属于正常现象

● 所购商品与使用说明书上的插图可能会有不符之处。

杯盖组的拆卸方法

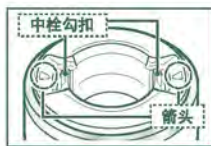
1 拆卸上盖

用手指捏着上盖的凸部，往箭头方向取下。



2 拆卸中栓

按箭头方向 (▷及◁)，用手指按压中栓勾扣 (2处) 取下。



3 拆卸上盖垫圈

用手指捏着凹部，边移动垫圈边取下。



4 取下阀垫圈

拆卸阀垫圈时，请小心不要让指尖等损伤垫圈。



5 拆卸中栓垫圈



安装时，请依拆卸方法相反顺序安装。

清理

- 为防止产生异味，污垢附着和发霉，一直长保清洁使用，请使用后务必清理。
- 请务必拆卸后清理。
- 刚开始使用时，可能会有塑料等异味，随着使用次数的增加会逐渐消失。

本体外侧 杯盖组 杯口套

- ① 用海绵沾上温水稀释的洗碗专用洗涤剂清洗。
 - ② 冲洗后用甩几次，并将水分充分擦净后晾干。
- 请在杯盖组拆开状态下清洗并晾干。
 - 难以清洗部份请使用市售的小刷子等清洗。

本体内侧

- ① 请使用有手柄的软质海绵刷等沾上温水稀释的洗碗专用洗涤剂清洗。
- ② 冲洗后擦净水分并晾干。

清理须知

- 请勿煮沸。请勿使用洗碗机、餐具干燥机等。
- 本体外侧请勿使用漂白剂。可能会造成本体的图案、印刷或贴纸脱落。
- 请勿使用信那水、金属钢丝球、含研磨材质的海绵刷、去污粉、洗洁剂、密封胶等清洗。
- 请勿使用含氯的漂白剂。
- 可整体清洗，请勿长时间放置于水中。
- 整体清洗本体后，请务必擦干水分。以免留下水迹及生锈。
- 请务必擦干上盖、上盖本体、中栓之间的残留水分。
- 长时间不使用时，请用温水或冷水充分清洗，完全晾干后放在远离高温和高湿度的场所存放。以免损伤本产品。

- 上盖组 (上盖及上盖垫圈)、阀垫圈、中栓垫圈及杯口套 (杯口套及杯口垫圈) 为消耗品。建议一年更换一次为宜。
- 本品采用了安全可靠且符合食品卫生安全要求的材料，但是，为了保证最佳性能，有部件受损时请及时更换。更换部件时，请预先记录型号和部件名称，然后联系您购买的经销商或象印客服中心。(需自费)

若有红色锈斑或水垢时的清理方法

使用过程中由于水质、异物等，可能导致本体内侧出现红色锈斑或水垢。此种状况出现时，请在热水中加入约10%的醋，并将其倒入本体内，不要安装杯盖组，放置30分钟~1小时，之后再本体内侧充分洗净。

茶垢等的清理方法

建议使用“象印不锈钢保温瓶清洗剂 SB-ZA01E”清洗不锈钢保温杯本体内侧、杯盖组、杯口套水垢或茶垢。(另售)
清洗本体时请卸下杯盖组。
具体事宜请咨询当地经销店。

品质标示

品名：不锈钢真空保温杯

型号	容量 (L)	重量 (kg)	保温效力 (°C)		保冷效力 (°C)
			1小时	6小时	6小时
SM-JZ36	0.36	0.21	≥86	≥66	≤10
SM-JZ48	0.48	0.25	≥87	≥70	≤9

■ 保温/保冷效力是商品在直立放置下，于室温 $20 \pm 2^{\circ}\text{C}$ 时，放入水量如 P.2 **饮料的位置** 图中所示高度的热开水后，其水温降至 $95 \pm 1^{\circ}\text{C}$ 开始经过1小时及6小时之后；或放入水量如 P.2 **饮料的位置** 图中所示高度的冷开水后，其水温升至 $4 \pm 1^{\circ}\text{C}$ 开始经过6小时后，所测得瓶内的温水或冷水水温。

材料“食品接触用”：

本体内侧 奥氏体型不锈钢06Cr19Ni10 (SUS304) (防粘涂层)
 本体外侧 奥氏体型不锈钢06Cr19Ni10 (SUS304) (亚克力树脂涂层)
 杯口 奥氏体型不锈钢06Cr19Ni10 (SUS304)
 杯口套 聚丙烯
 中栓 聚丙烯
 垫圈 硅胶

与食品接触部分的其他材料符合相应国家标准的规定
 执行标准：GB/T 29606-2013 不锈钢真空杯 (合格品)

上海象印家用电器有限公司

联系地址：中国(上海)自由贸易试验区富特北路225号第三层D13部位
 (邮编:200131)

制造商：象印有限公司

制造商地址：日本国大阪府北区天满1丁目20番5号

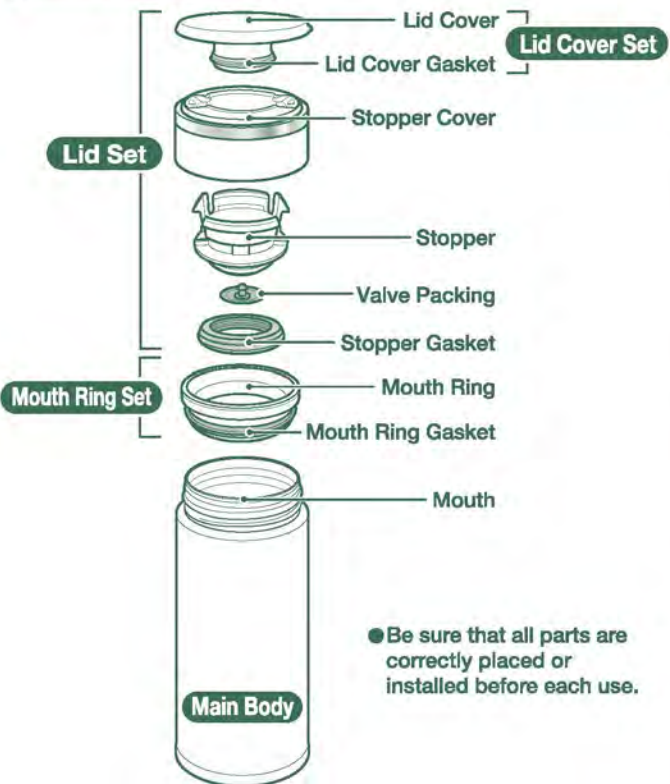
原产地：泰国

象印公司全国服务热线：800-819-9119

手机用户拨打：400-680-9119

公司主页：<http://zjirushi-china.com>

Name of Each Part



Please read these instructions before use, and keep for future reference.

Important Safeguards

Do not allow infants or small children to use this product. Keep out of the reach of infants and small children.

Mishandling may cause injury or scalding.

Do not place near heat sources such as gas stoves, ovens and heaters.

Doing so may cause deformation or discoloration of the Mug.

Do not heat in a microwave.

Doing so may cause sparks, deform or discolor the Mug.

Do not use if the Mug loses its heat retention properties.

The outside of the Main Body may become very hot if hot beverages are poured inside.

Consume beverages within the same day.

Not doing so may cause spoiling. In addition, if left inside for a long period of time, spoiled beverages may produce gas, raising the pressure inside the Main Body and causing the Lid Set to burst or beverages to spill, resulting in injuries and scalding.

Always close the Lid Set securely.

Hot beverages may leak and cause scalding.

This Mug is for holding beverages and keeping them hot or cold.

Please do not use for other than intended purposes.

Do not remove the sticker on the bottom of the Mug.

Doing so may cause rust or holes.



● Please follow these instructions to prevent scalding, deterioration and discoloration of beverages, as well as malfunction and staining of the Mug.

Leave 1cm (1/2-inch) room on top when filling the Main Body.

Contents may overflow when placing the Lid Set.



Clean the Main Body after every use.

Not cleaning thoroughly may cause the Main Body to rust, beverages to spoil, or cause pinholes.

Do not drink out of the Mug while driving.

Doing so may cause scalds or stain the interior of the car or clothes. Attempting to use while driving may also cause serious accidents.

Do not disassemble the Main Body.

Always make sure the Lid Cover, Stopper, Valve Packing, Stopper Gasket and Mouth Ring Gasket are attached.

Contents may leak and/or cause scalding.

When containing hot beverages:

● **Do not shake the Mug.**

Doing so may cause scalds or injury.

● **Be careful not to scald yourself when drinking out of the Mug.**

Due to its vacuum insulation, the outside of the Main Body will not become hot, while hot beverages will remain very hot for many hours. Please use caution when drinking.

● **Always make sure to use with the Lid Cover attached.**

The interior of the Lid Set may become hot and cause scalds or injury.

When filling the Mug with sports drinks:

● In order to prevent rusting and/or pinholes, rinse the inside and outside of the Main Body, the Lid Set and the Mouth Ring Set immediately after consumption.

● Clean the inside using a soft sponge to protect the nonstick coating from being scratched.

When using a vehicle cup holder accessory:

① **Always keep the Lid Set securely closed when not drinking.**

Beverage may spill if the Mug is tipped over, causing scalds or injury.

② **Make sure the Mug fits into the holder securely before placing it in.** Do not use the Mug if it does not fit into the holder securely as it may tip over and cause scalds, injury or accidents.

③ **Check that the strength of the cup holder is sufficient to hold the Mug before using.**

The Mug may fall and cause injuries or burns, or stain the interior of the car or clothes if the cup holder does not hold up.

④ **Do not use a hanging-type cup holder that attaches to the window or air vent.**

The cup holder may fall off.

● **The Mug may not fit into some cup holders.**

Do not fill the Mug with the following:

● **Dry ice and carbonated drinks:**

Contents may spill out or the pressure may cause the Lid Set to burst, causing injuries.

● **Liquids high in sodium such as soup and Kobu-cha:**

Although the liner is made of 18/8 stainless steel and is nonstick coated, salt may cause rust resulting in loss of thermal insulation.

● **Dairy products and fruit juice:**

If left inside for a long period of time, contents may spoil and produce gas that may cause the Lid Set to burst, causing injuries.

● **Fruit pulp and tea leaves:**

May become caught on the Stopper Gasket and cause contents to spoil.

Do not place near open flames (from gas stoves, etc.), on top of electric heaters or IH hot plates, or other IH cooking devices.

Doing so may cause a fire or malfunction.

Warnings & Cautions

Do not allow hot kettles to touch the Mouth Ring or the mouth of the Main Body.

The Mug may tip over, causing scalds.



Do not tilt the Main Body suddenly when drinking.

The beverage may spill and cause scalding or stain clothes.

Do not leave a tea bag inside and close the Lid Set.

The tea bag may swell and cause leakage or cause drinks to spill out.

Avoid dropping or hitting against hard surfaces.

Damage to the plastic or stainless steel surface of the Mug may reduce its ability to retain heat.

Do not rub the design on the outside of the Main Body strongly. It may come off.

Hot tea may discolor if stored for a long period of time. We recommend the use of tea bags and brewing right before consumption.

Store the Mug upright when carrying inside bags to prevent beverages from spilling.

The rattling noise that may be heard when the Main Body is shaken comes from the copper or aluminum foil in the vacuum insulation to increase heat (cold) retention and does not indicate a malfunction.

This product is designed to be drunk from directly. If it is used for pouring, the beverage may splash.

● The illustrations used in this instruction manual may vary from the actual product you have purchased.

Be sure that the Lid Cover, Stopper, Valve Packing, Stopper Gasket and Mouth Ring Gasket are attached properly to prevent beverages from leaking.

Always disassemble the Lid Set when washing then wipe dry.

Water may collect inside the Lid Cover, the Stopper Cover or the Stopper, and may drip out if not dried well.

Clean the Stopper, Stopper Gasket, Valve Packing, Mouth Ring and Mouth Ring Gasket after every use.

Not doing so may cause decay, mold, odor or discoloration. It may also cause leaks.

Do not hold the Mug by the Lid Set or Lid Cover.

The Mug may drop and cause injuries.

Do not attach parts other than those specifically for this product. Doing so may cause leaks or breakage.

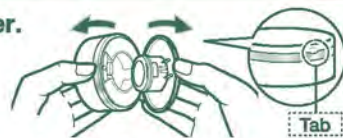
Do not force large ice cubes in. Doing so may cause deformation or damage to the product.

Attach the Lid Set properly and turn the Mug upside down to make sure contents do not leak.

How to Disassemble the Lid Set

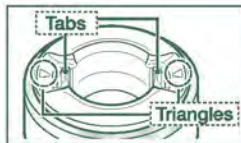
1 Remove the Lid Cover.

Hold the Tab and pull apart as illustrated.



2 Remove the Stopper.

Push the Tabs in as illustrated by the triangles to remove.



3 Remove the Lid Cover Gasket.

Remove the Lid Cover Gasket utilizing the Small Opening.



4 Remove the Valve Packing.

When removing the Valve Packing, be careful not to damage it with your nails.



5 Remove the Stopper Gasket.



Please follow the steps in reverse to put the parts back together.

How to Take Care of Your Mug

- Clean the product after each use to prevent odors, dirt and mold, and to keep the product sanitary.
- For better usage, please remember to clean after every use.
- When you first use the product, there may be a plastic smell. However, this will become less noticeable with use.

Exterior, Lid Set and the Mouth Ring Set

- ① Wash with warm water and mild dishwashing liquid using a soft sponge.
- ② Rinse, shake a few times and wipe dry.
 - When washing the Lid Set, disassemble it first then wash and dry.
 - Please use a small brush (sold in stores) if necessary.

Interior

- ① Wash with warm water and mild dishwashing liquid using a soft sponge with handle.
- ② Then rinse and wipe moisture out to dry.

When Cleaning Your Product:

To protect the paint, print or stickers on the outside of the Main Body:

- Do not use a dishwasher or dish-dryer. Do not boil to sanitize.
- Do not use bleach on the outside of the Main Body.

- Do not clean using paint thinner, metal wire scrub brushes, scrubbing brushes that include abrasive cleaners, polishing powders, cleansers, melamine sponges, or any similar items.
- Do not use chlorine type bleach.
- Do not soak in water for an extended period of time.
- Wipe moisture off thoroughly to prevent water stains or rusting.
- Thoroughly wipe off any water between the Lid Cover, the Stopper Cover and the Stopper.
- If the product is not going to be used for an extended period, wash thoroughly with cold or lukewarm water and dry well. Store the product away from high temperatures and humidity. These may damage the product.

Replacing the Lid Cover Set, Valve Packing, Stopper Gasket and Mouth Ring Set

We take care in only using materials that are safe and hygienic for food contact. However, if plastic parts become damaged or its surface becomes rough, please replace them for optimum performance. The Lid Cover Set (Lid Cover and Lid Cover Gasket), Valve Packing, Stopper Gasket and Mouth Ring Set (Mouth Ring and Mouth Ring Gasket) may need to be replaced due to time and wear. Please check them about once a year. When replacing parts, please record the model number and part name beforehand. Then contact either the store where you purchased the product or Zojirushi Customer Service. Replacement parts may be available for an additional charge.

To Remove Rust Spots and Water Stains:

You may find rust spots or water stains caused by impurities in the water. To remove these stains, fill the Main Body with hot water with 10% vinegar and let it stand for 30 minutes to an hour without attaching the Lid Set, then wash the interior thoroughly.

To Remove Coffee and Tea Stains:

To remove coffee and tea stains from the interior, the Lid Set and the Mouth Ring Set, we recommend using Zojirushi's cleaning detergent SB-ZA01E. Always remove the Lid Set when using SB-ZA01E. Contact Zojirushi Customer Service or your local dealer for further information.

SPECIFICATIONS:

Product: STAINLESS MUG

Model No.	Capacity	Weight	Heat Retention (Above)	Cold Retention (Below)
SM-JZ36	0.36 liter (12 oz.)	0.21 kg (8 oz.)	86°C (187°F) @ 1 hr./ 66°C (151°F) @ 6 hrs./	10°C (50°F) @ 6 hrs./
SM-JZ48	0.48 liter (16 oz.)	0.25 kg (9 oz.)	87°C (189°F) @ 1 hr./ 70°C (158°F) @ 6 hrs./	9°C (48°F) @ 6 hrs./

Heat/Cold Retention Testing Conditions:

At a room temperature of 20°C±2°C (68°F±4°F), the Main Body is filled with hot or cold water up to the level illustrated in **Drink Level** on p. 2, and left standing in an upright position.

For heat retention, once the hot water reaches 95°C±1°C (203°F±2°F), the temperature is measured after 1 hour and 6 hours.

For cold retention, once the cold water reaches 4°C±1°C (39°F±2°F), the temperature is measured after 6 hours.

Materials: Inner Liner	Stainless Steel (Nonstick Coated)
Exterior	Stainless Steel (Acrylic Resin Painted)
Mouth	Stainless Steel
Mouth Ring	Polypropylene
Stopper	Polypropylene
Gasket & Packing	Silicone

Manufacturer: Zojirushi Corporation
Address: 1-20-5 Tenma, Kita-ku, Osaka 530-8511, Japan